

STREACOM FC50D

Computer Chassis Installation Guide



Silent & Elegant

CONTENT

1. Checking parts bag-----	3
2. Opening the FC5 Chassis-----	5
3. Installation of Heatsink System-----	6
4. Installation of Hard Drive-----	10
5. Installation of IR receiver-----	10
6. Installation of Optical Drive -----	11
7. Setting cables-----	12
8. Close the Top panel-----	12

1. Checking parts bag

➤ 1. Taking out parts box



1.1 Open FC5 parts box

1.2 Take out the accessories list

1.3 Check the accessories 'quantity according to accessories' list

➤ 2.Checking accessories



A



B



C



D



E



F



G



H



I



J



K



L



M



N

A: Motherboard Heat Block

B: Side Panel's Small Heat Block

C: CPU Heat Block Shrapnel①

D : CPU Heat Block Shrapnel②

E: CPU Nut

F : ODD Silica Gel Pad

G : Heat pipe

H: 2.5'HDD Screw (FM3*6)

I: Screw PM3*12

J: ODD Screw (PM2*3.5)

K: Motherboard Screw (PM3*5)

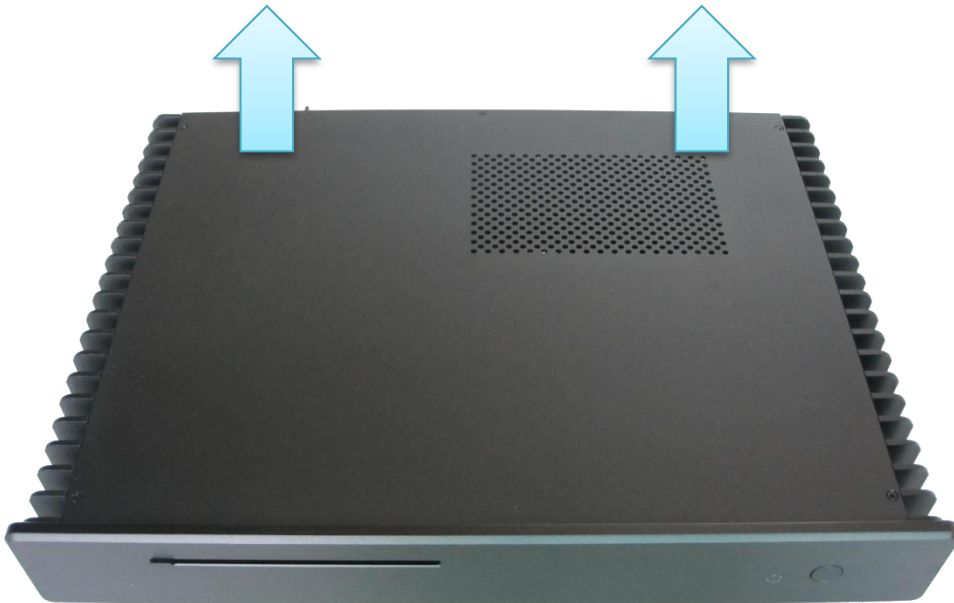
L : 3.5'HDD Screw (FM6#32*6)

M: Screw PM3*6

N: Screw FM3*5

2. Opening the HTPC case

➤ 1. Open top panel



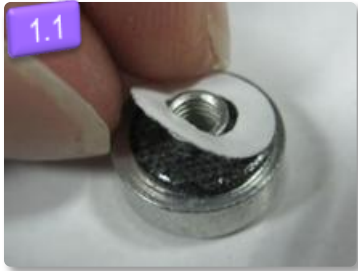
1.1 Put HTPC case on the work desk

1.2 Remove the 5pcs screws on the top panel by cross screwdriver

1.3 Take out the top panel (Watching out damaging the surface)

3.Installation of Heatsink System

➤ 1. Installing CPU nut



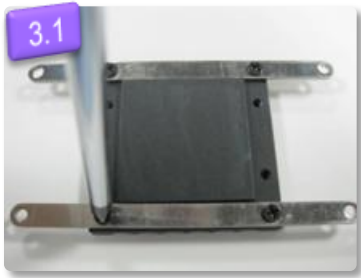
- 1.1 Tear off the double faced adhesive tape protecting paper on CPU nut (E)
- 1.2 Press CPU nut to motherboard cooling hole from motherboard's underside
- 1.3 Press other 3pcs CPU nut

➤ 2. Installing I/O baffle



- 2.1 Insert the I/O baffle to case's inside from case's back baffle
- 2.2 Putt motherboard and lock the screws (K)

➤ 3. Installing the cooling panels

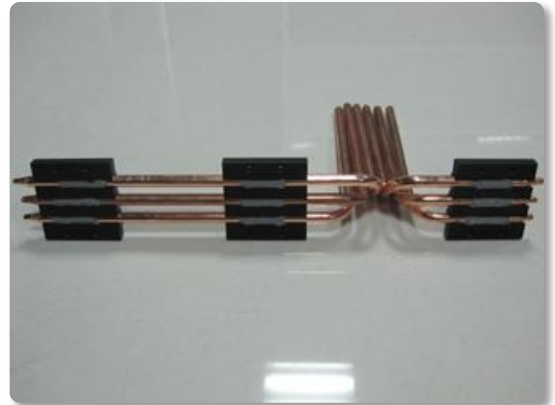
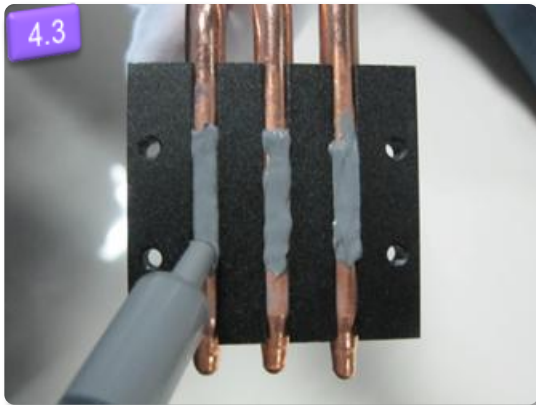


- 3.1 Use accessories' screws (N) ,Assemble the motherboard , cooling panel (down) (A) With CPU shrapnel (C)
- 3.2 Wear thermal grease on the tangent surface between CPU and motherboard cooling panels
- 3.3 Lock CPU shrapnel and motherboard

➤ 4. Installing heatsink pipes



- 4.1 Assemble the heatsink pipes and small side cooling panels together
- 4.2 According to same assembling way Insert heatsink pipes to other side cooling panels, showed as picture



4.3 Wear thermal grease on the heatsink pipes (showed on pictures), Spinn the heatsink pipes, making thermal grease becoming uniform mixing. Follow the same way to install the other two

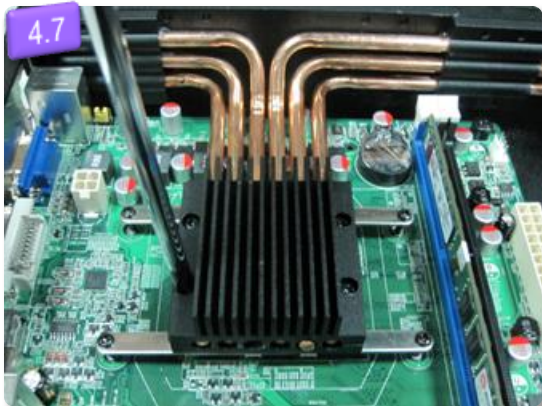
4.4 Lock side cooling panels with side panels by accessories' screws. According to heatsink pipes' place to choose the suitable side panels' holes.





4.5 Wear thermal grease on cooling panels' V bay.

4.6 Put heatsink pipes on cooling panels' V bay, then wear thermal grease on heatsink pipes.

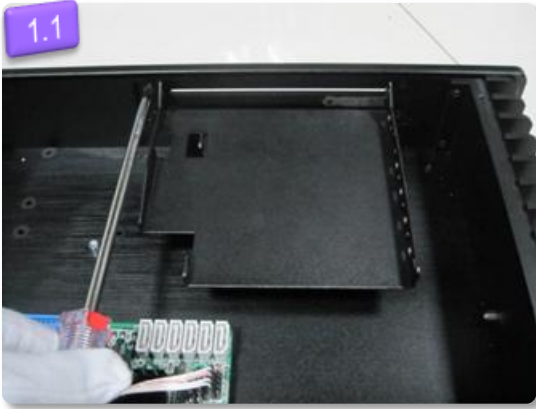


4.7 Cove motherboard cooling panels (up) (A) , Locking 4 screws (M)

4.8 Heatsink pipes' assembling is finished

4. Installation of Hard Drive

➤ 1.Installing HDD



1.1 Take out ODD bracket



1.2 Insert HDD

Choosing suitable assembling way according to HDD model.

5. Installation of IR receive

➤ 1.Installing IR receiver



1.1 Install IR receiver by accessories' screws, showed on page 2

6.Installation of Optical Drive

➤ 1.Stick silica gel pad



1.1 Take out silica gel pad (F) ,then take out protecting paper.

1.2 Stick silica gel pad on ODD hole corresponds with bracket ODD hole.

➤ 2.Instal ODD



2.1 Lock ODD screws (J)

2.2 Install ODD in the case

7. Setting cables

➤ 1. Insert all PSU lines and data lines



1.1 Insert all PSU lines and data lines

1.2 Check the cables are inserted right or not

8. Close the Top panel

➤ 1. Assembling is finished



2.1 Covering the top panel, Locking screws (FM3*5)

2.2 Done